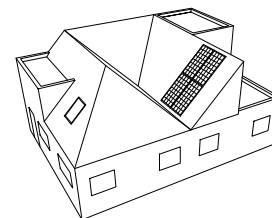


Kopgevel-
overstekvoorziening
Principedetails

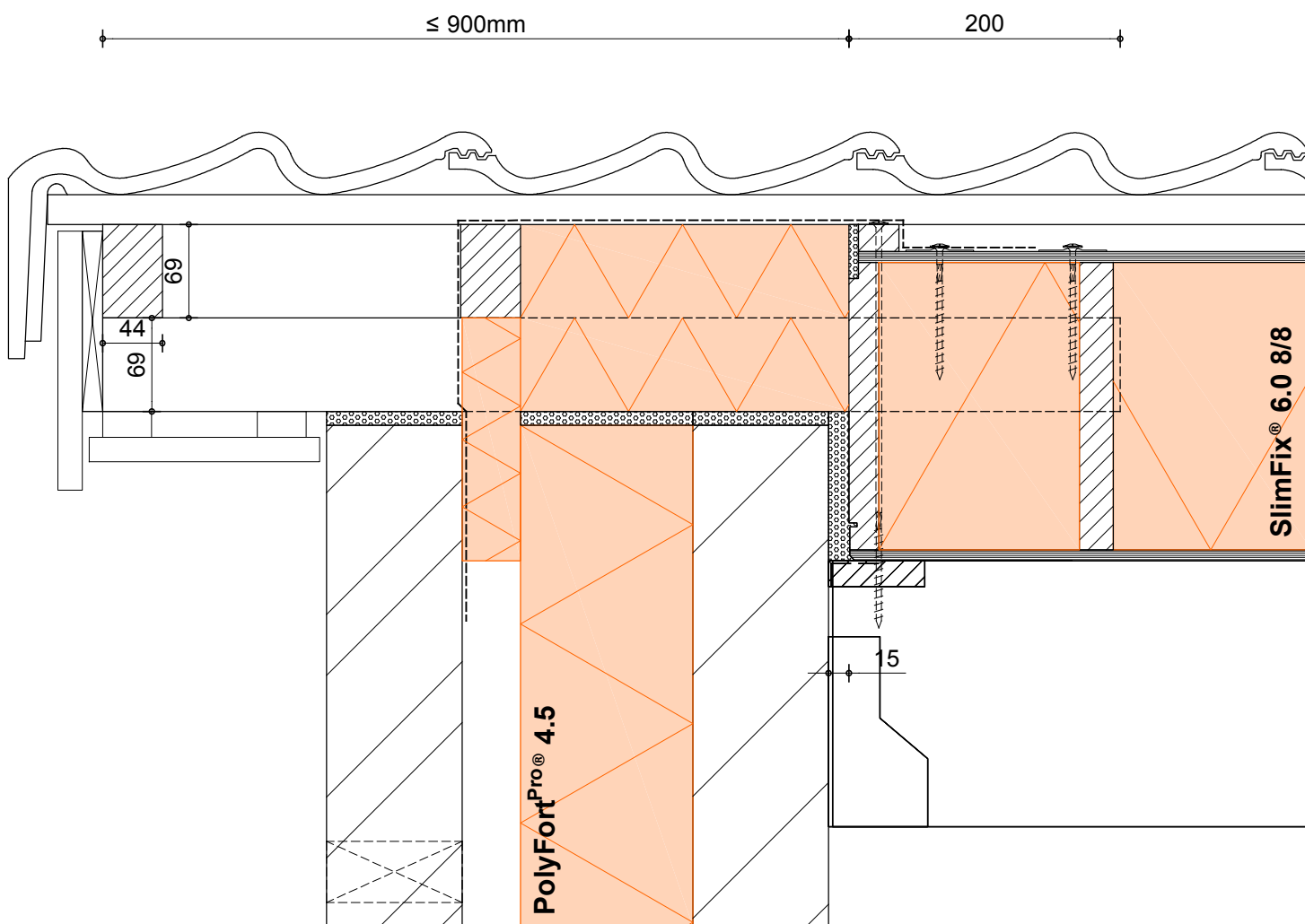
Detail gebaseerd op:

- $R_c \text{ wand} \geq 4.5 \text{ m}^2\text{K/W}$
- $R_c \text{ dak} \geq 6.0 \text{ m}^2\text{K/W}$
- $q_{v10} \leq 0.4 \text{ dm}^3/\text{s/m}^2$



1:5 | A4 | V19.1

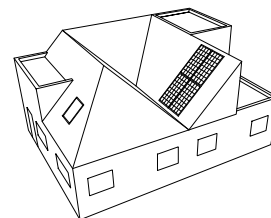
TERUG NAAR HET
OVERZICHT



Detail gebaseerd op:

- $R_c \text{ wand} \geq 4.5 \text{ m}^2\text{K/W}$
- $R_c \text{ dak} \geq 6.0 \text{ m}^2\text{K/W}$
- $q_{v10} \leq 0.4 \text{ dm}^3/\text{s/m}^2$

1:5 | A4 | V19.1



TERUG NAAR HET
OVERZICHT

